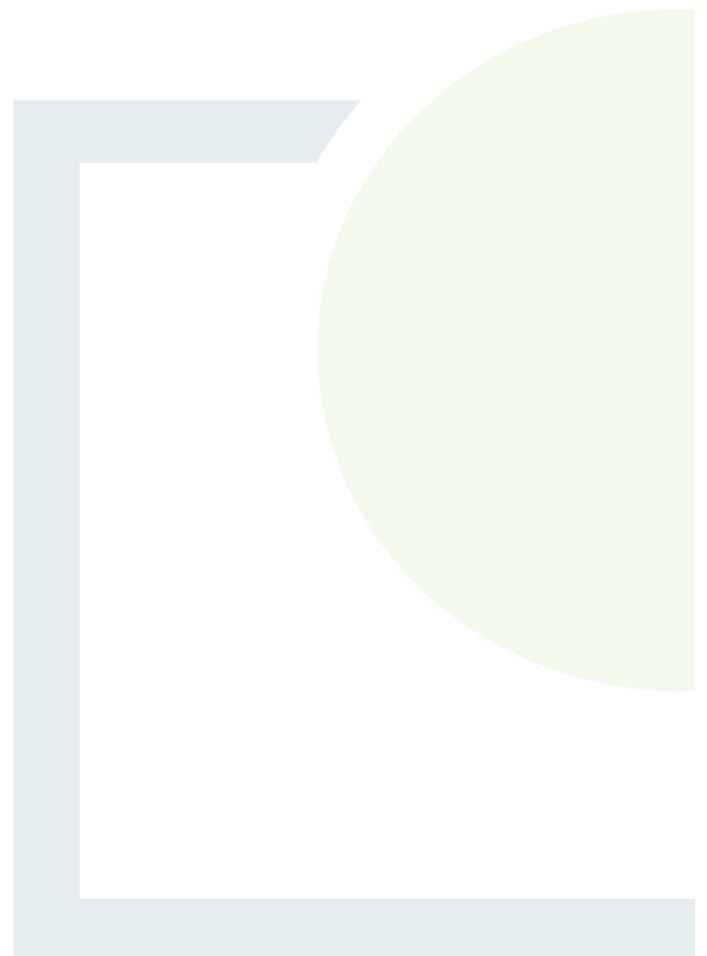


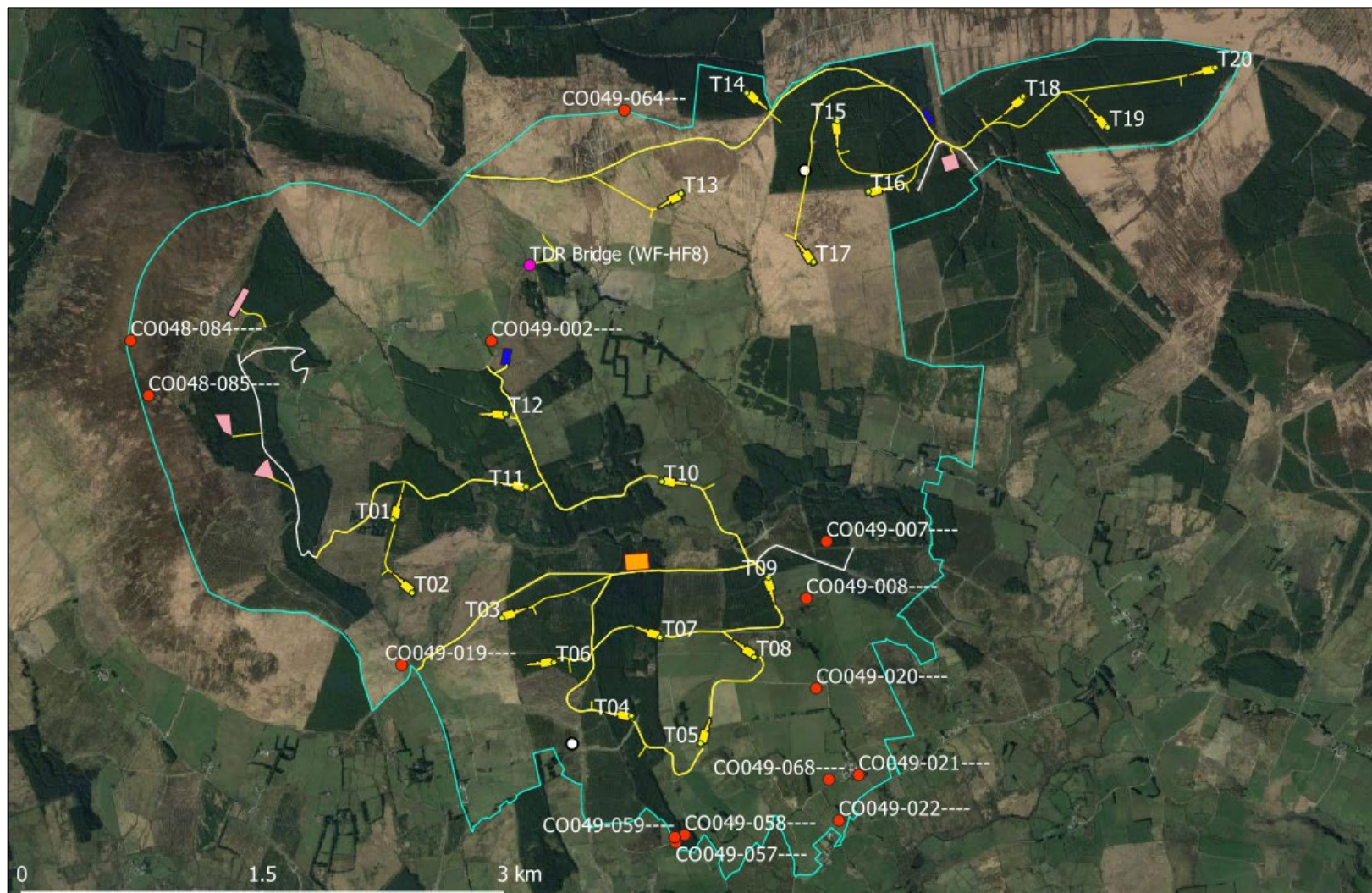


CONSULTANTS IN ENGINEERING,  
ENVIRONMENTAL SCIENCE  
& PLANNING

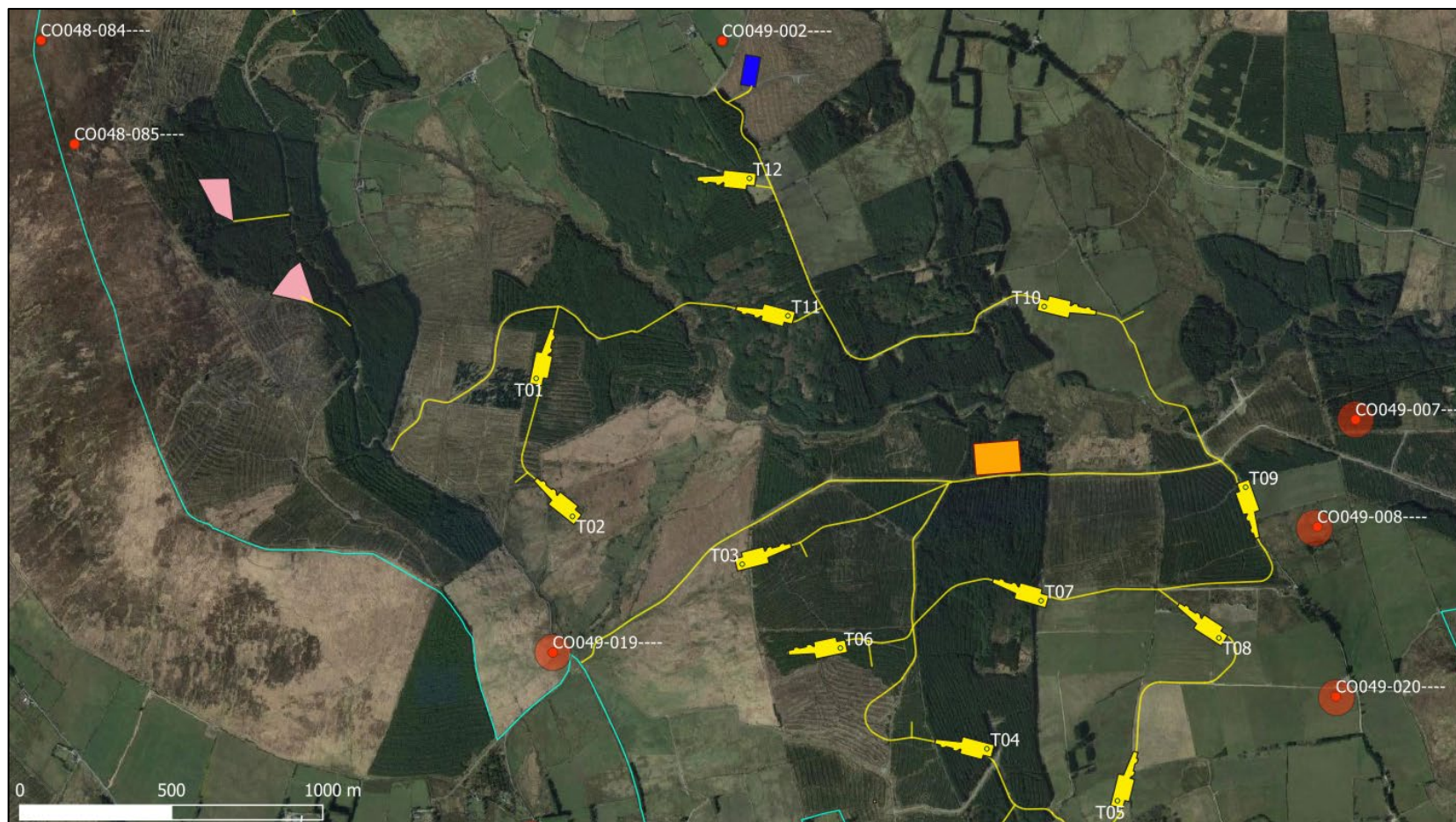
# Appendix 14.1

Cultural Heritage Figures

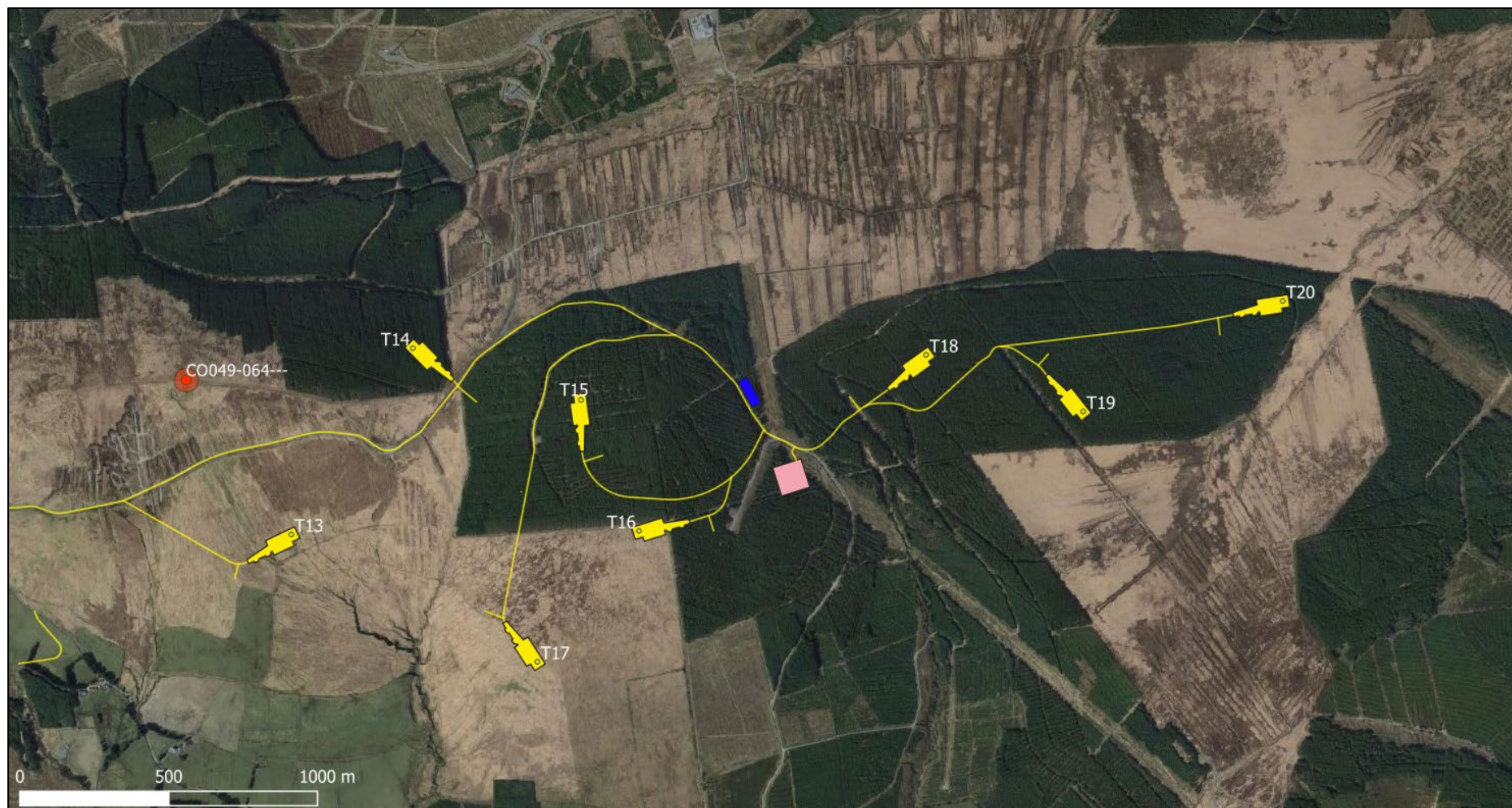




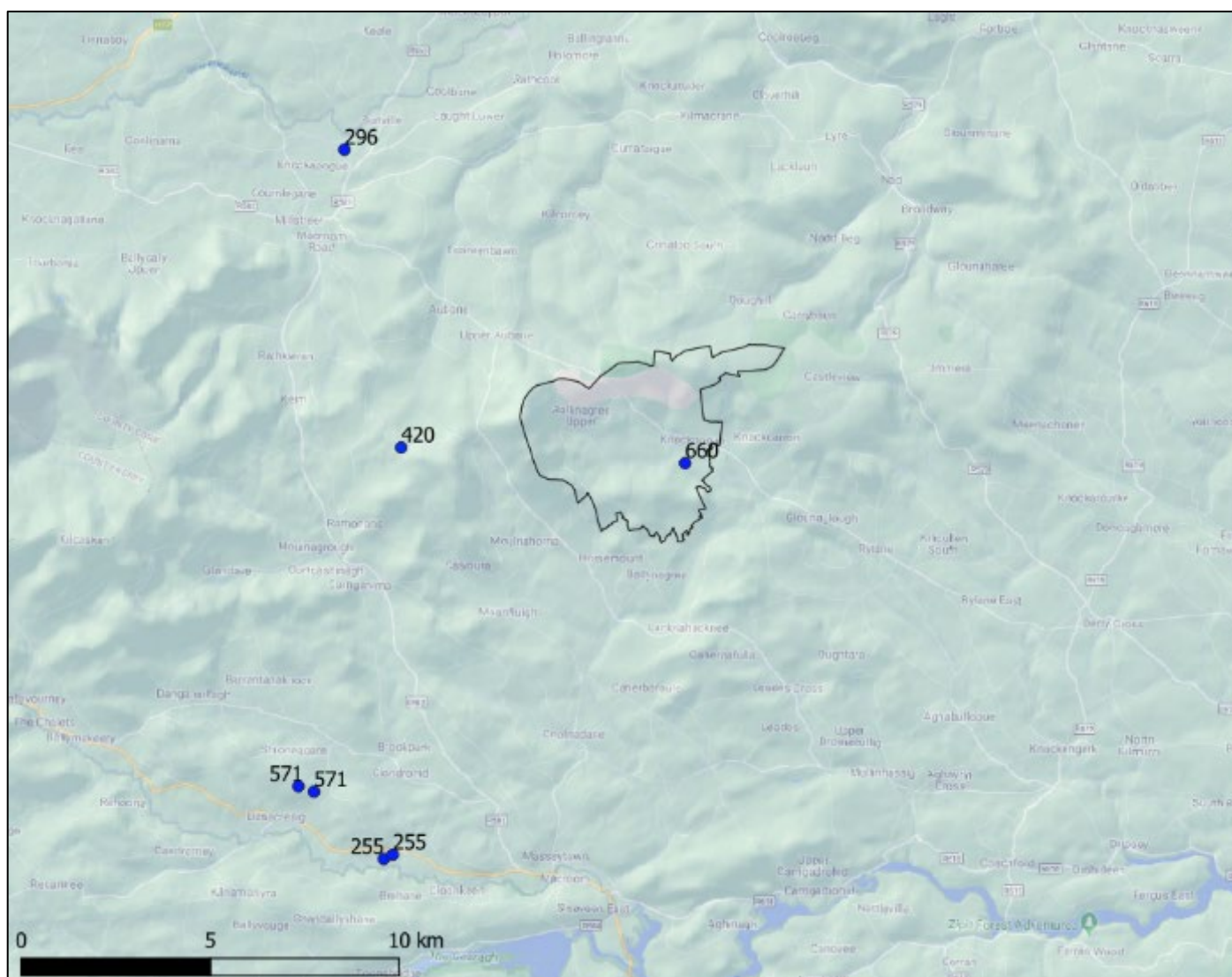








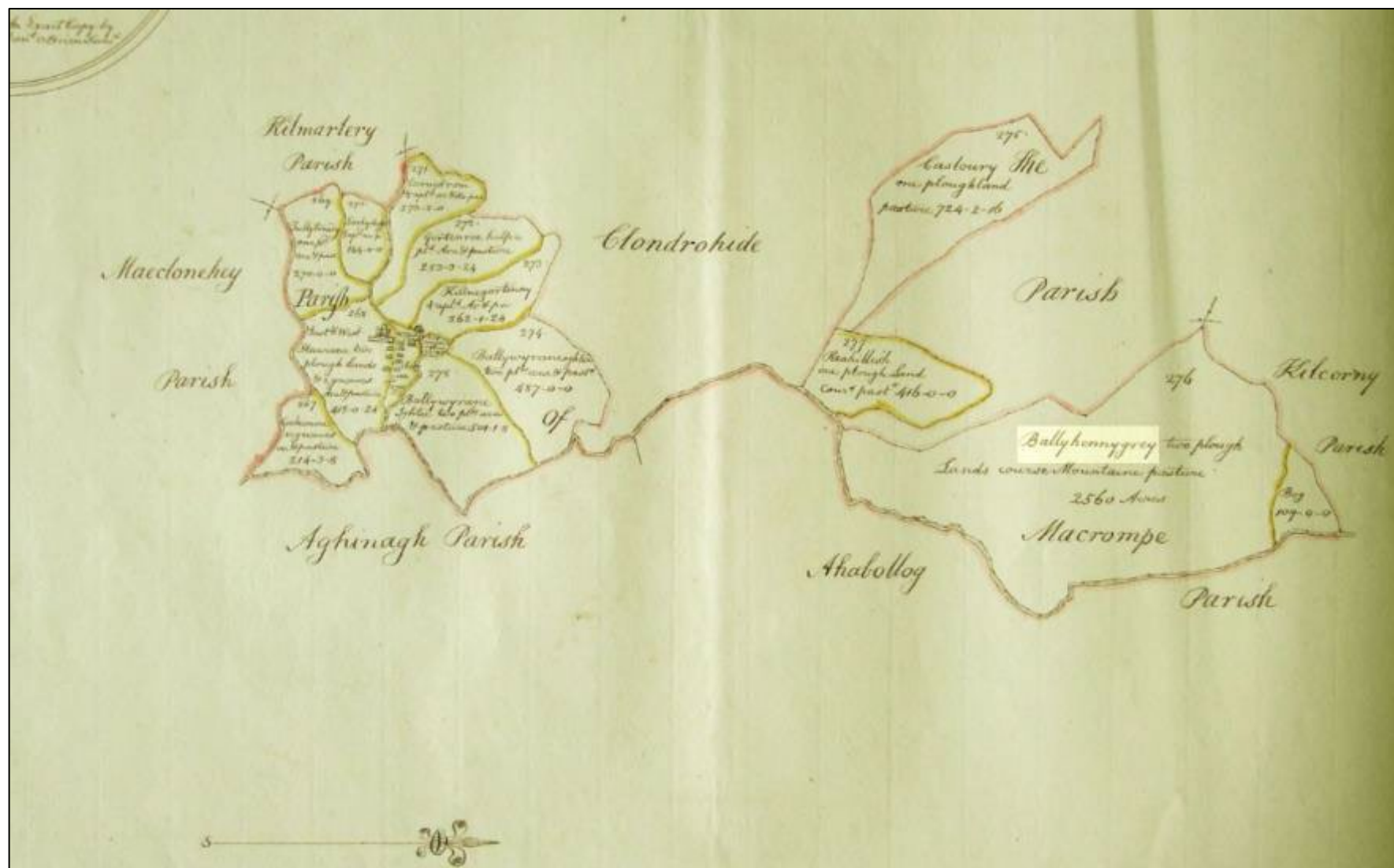


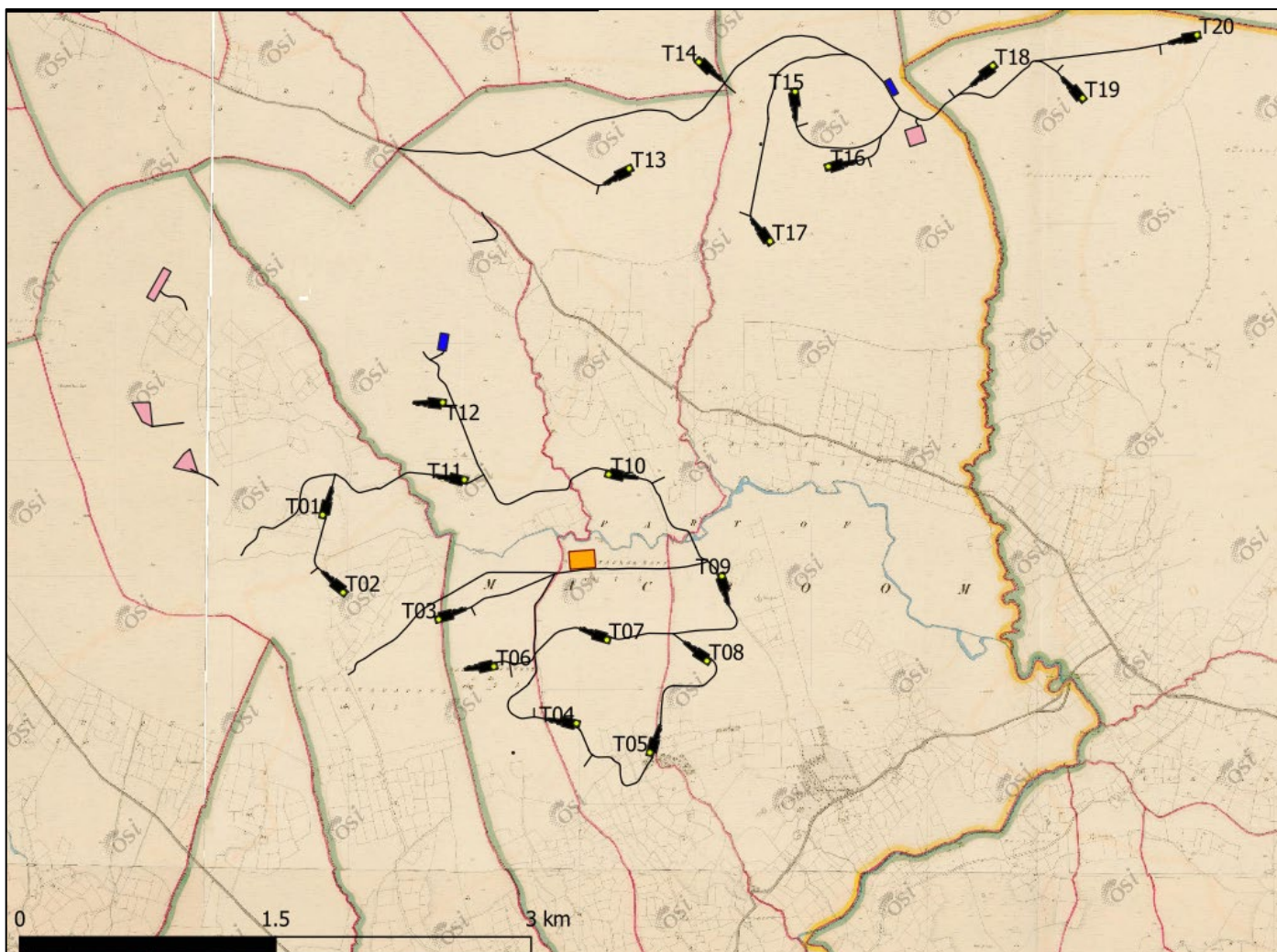




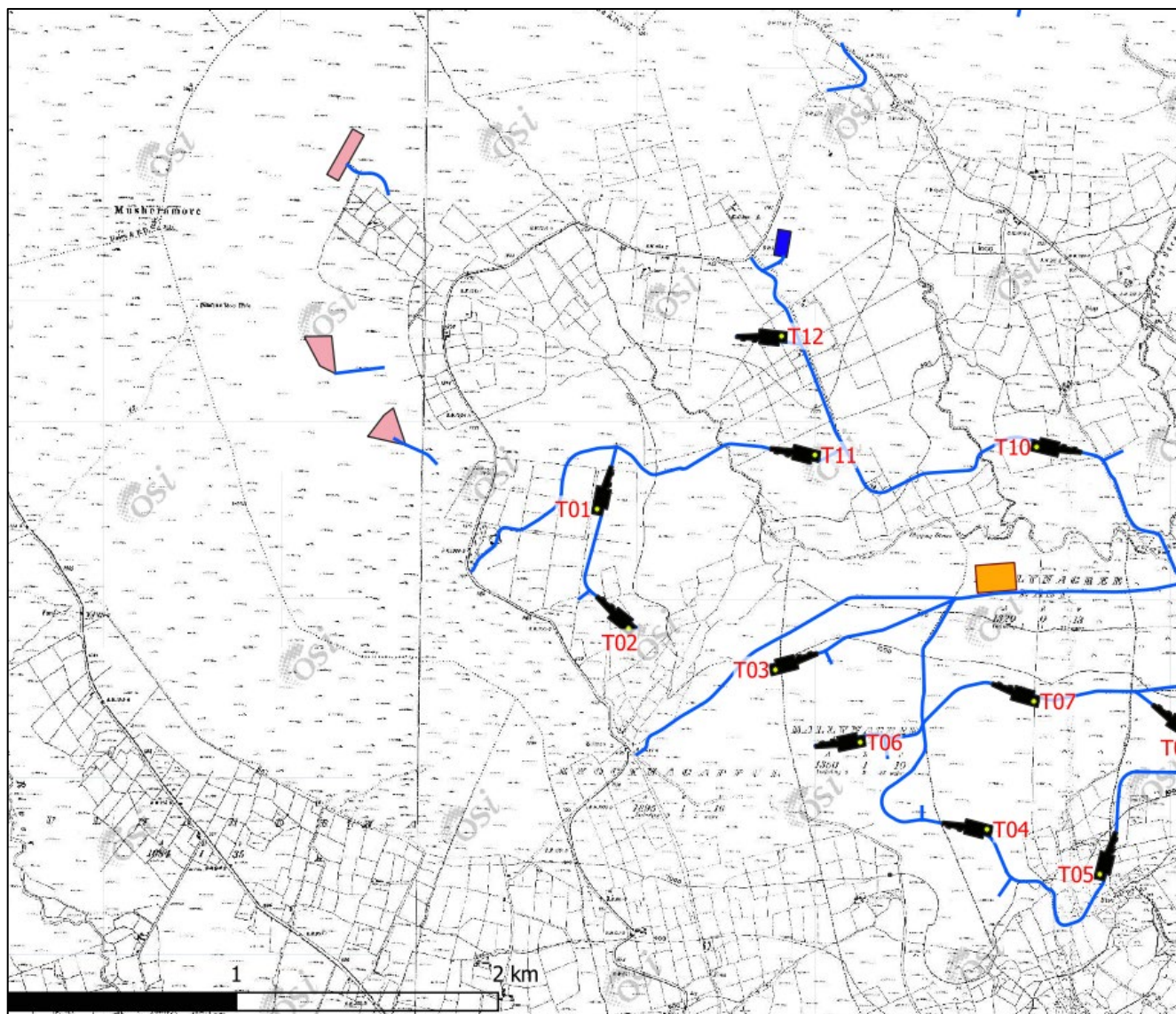


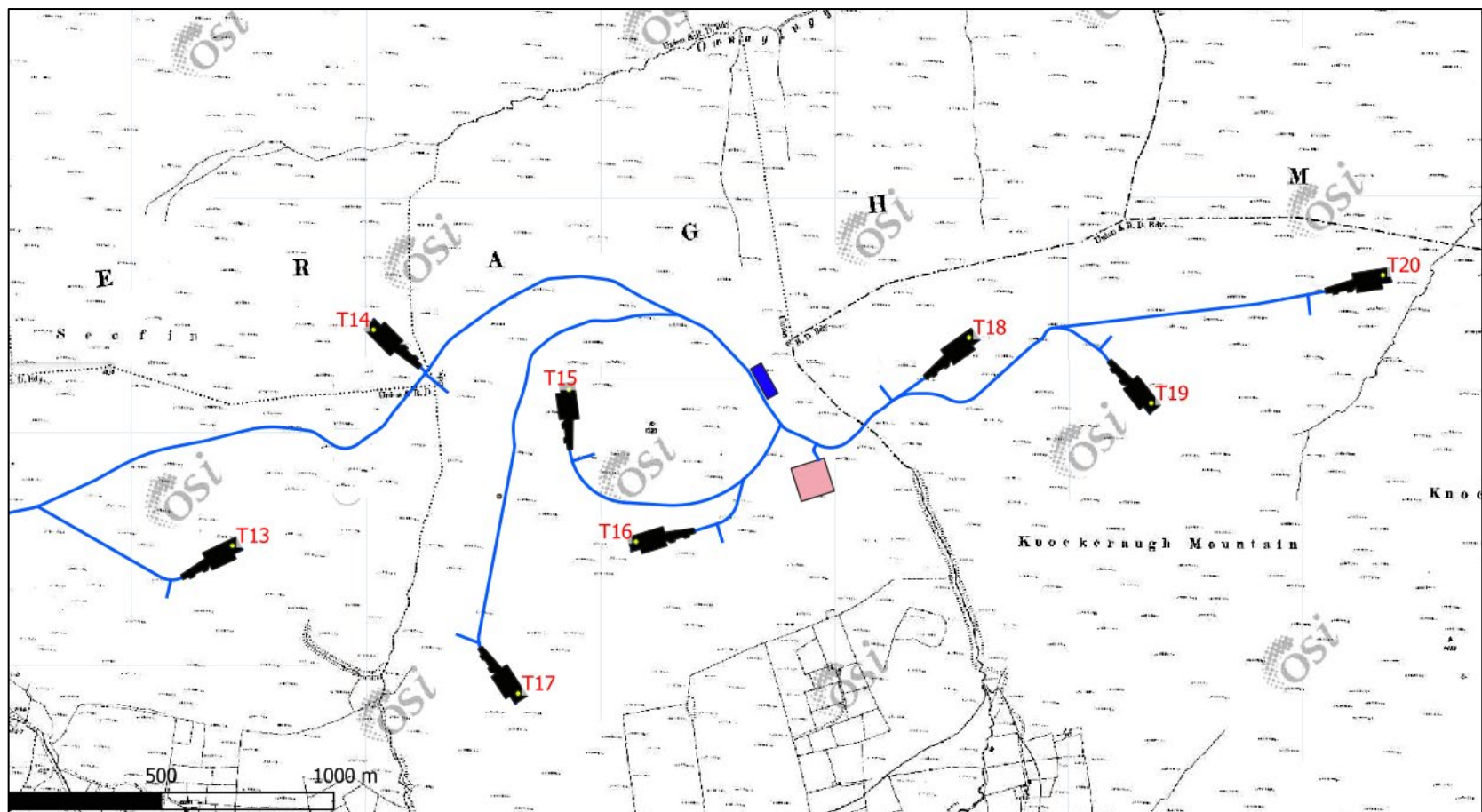
The Special Copy by  
Lambert & Co. 1840



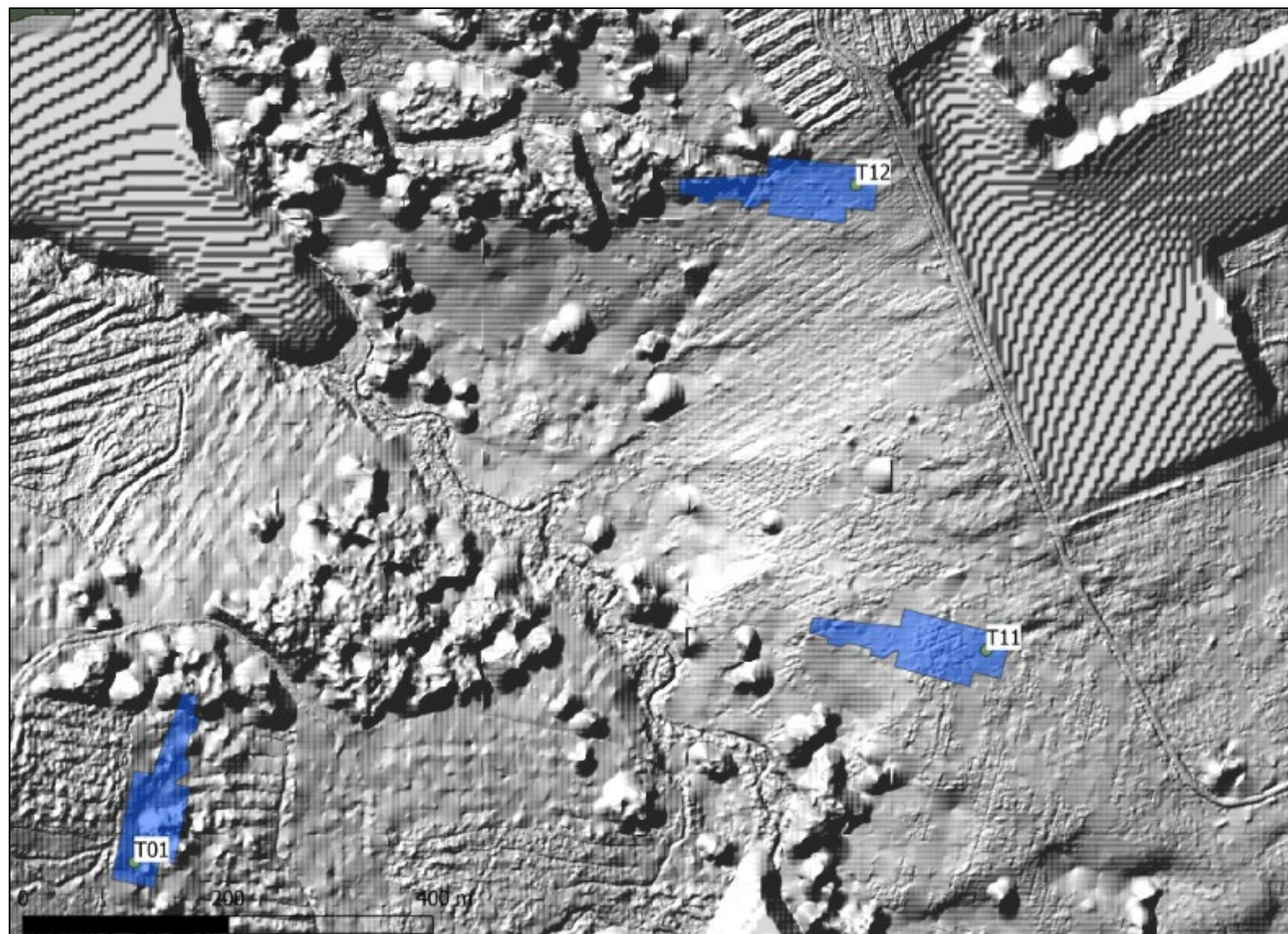




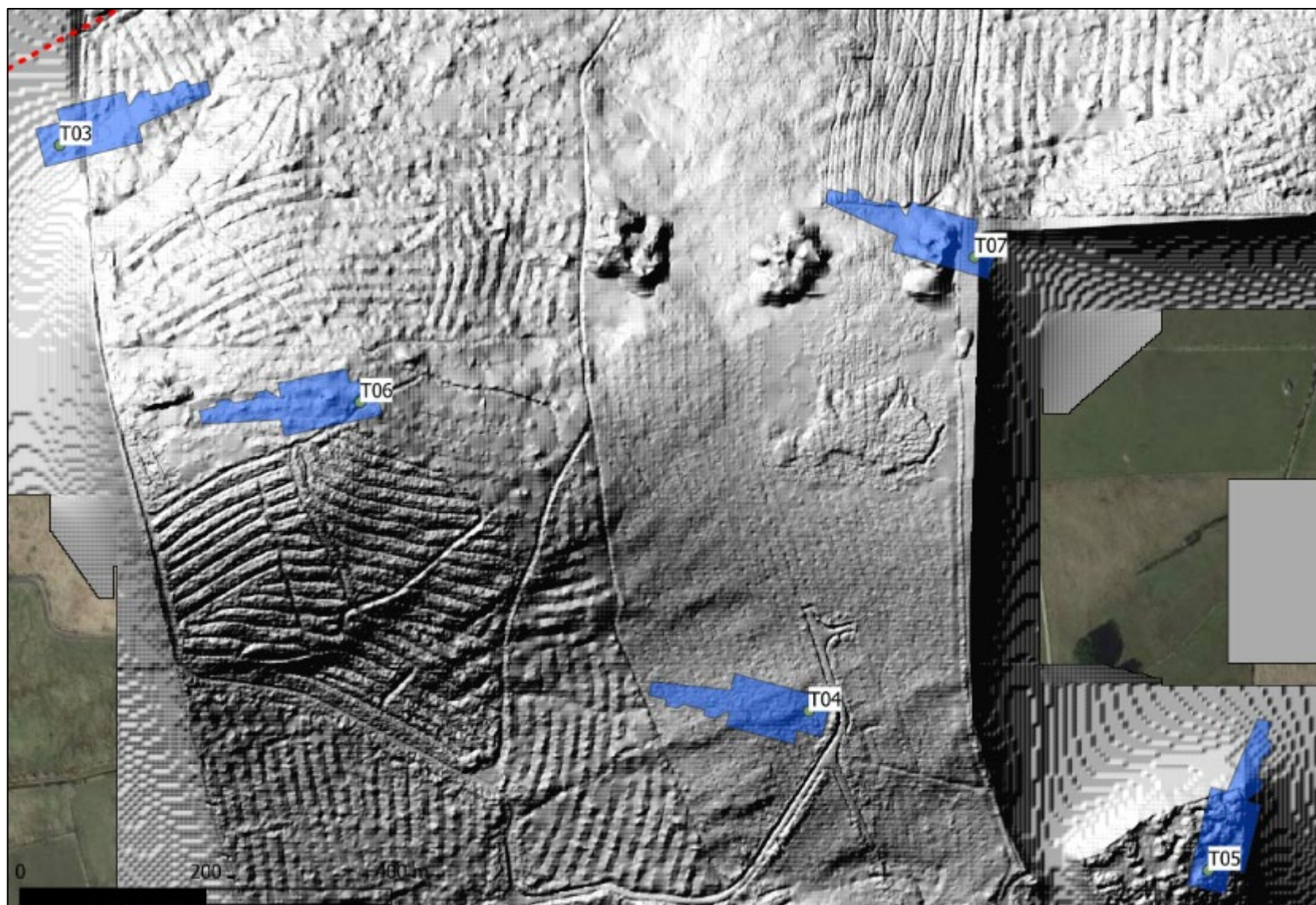




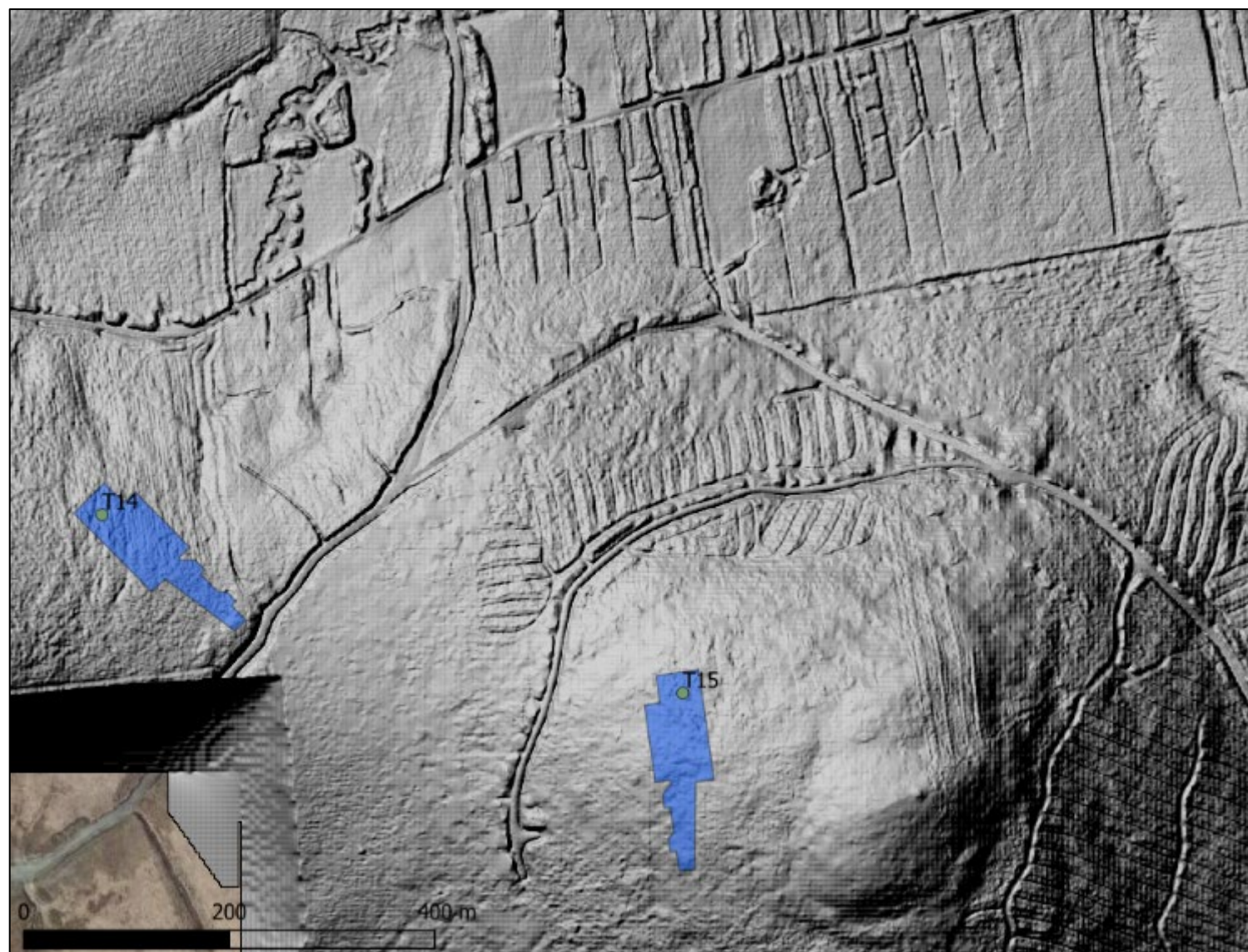


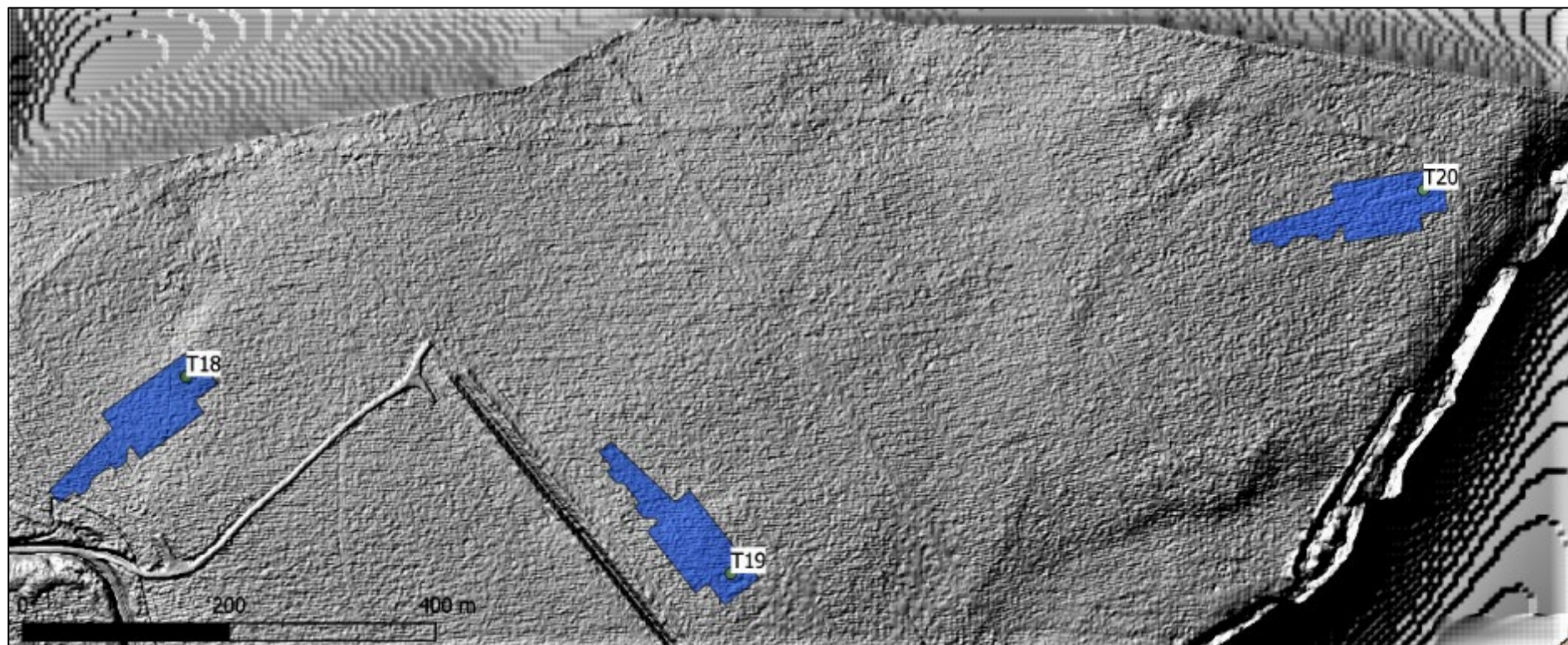


















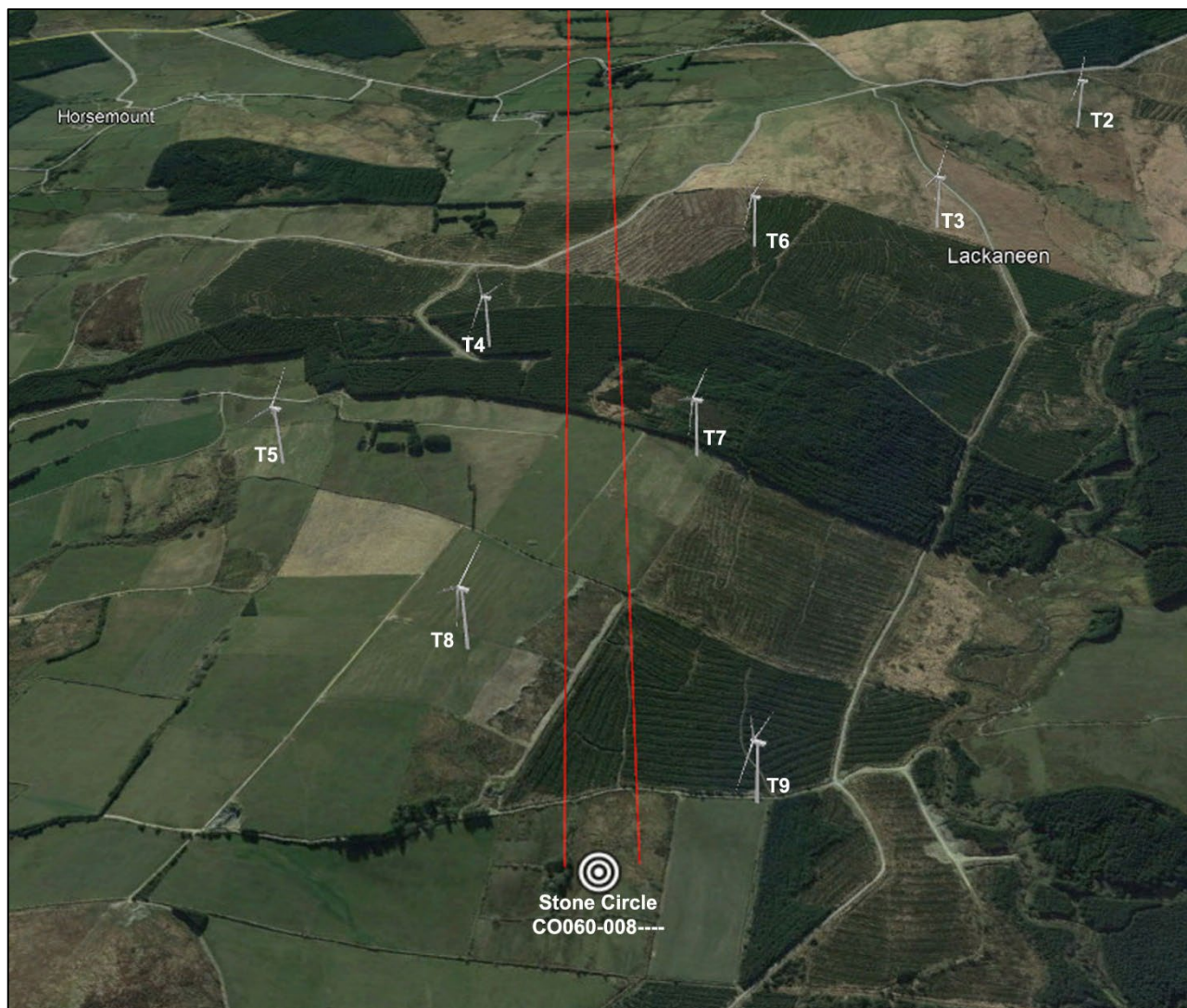






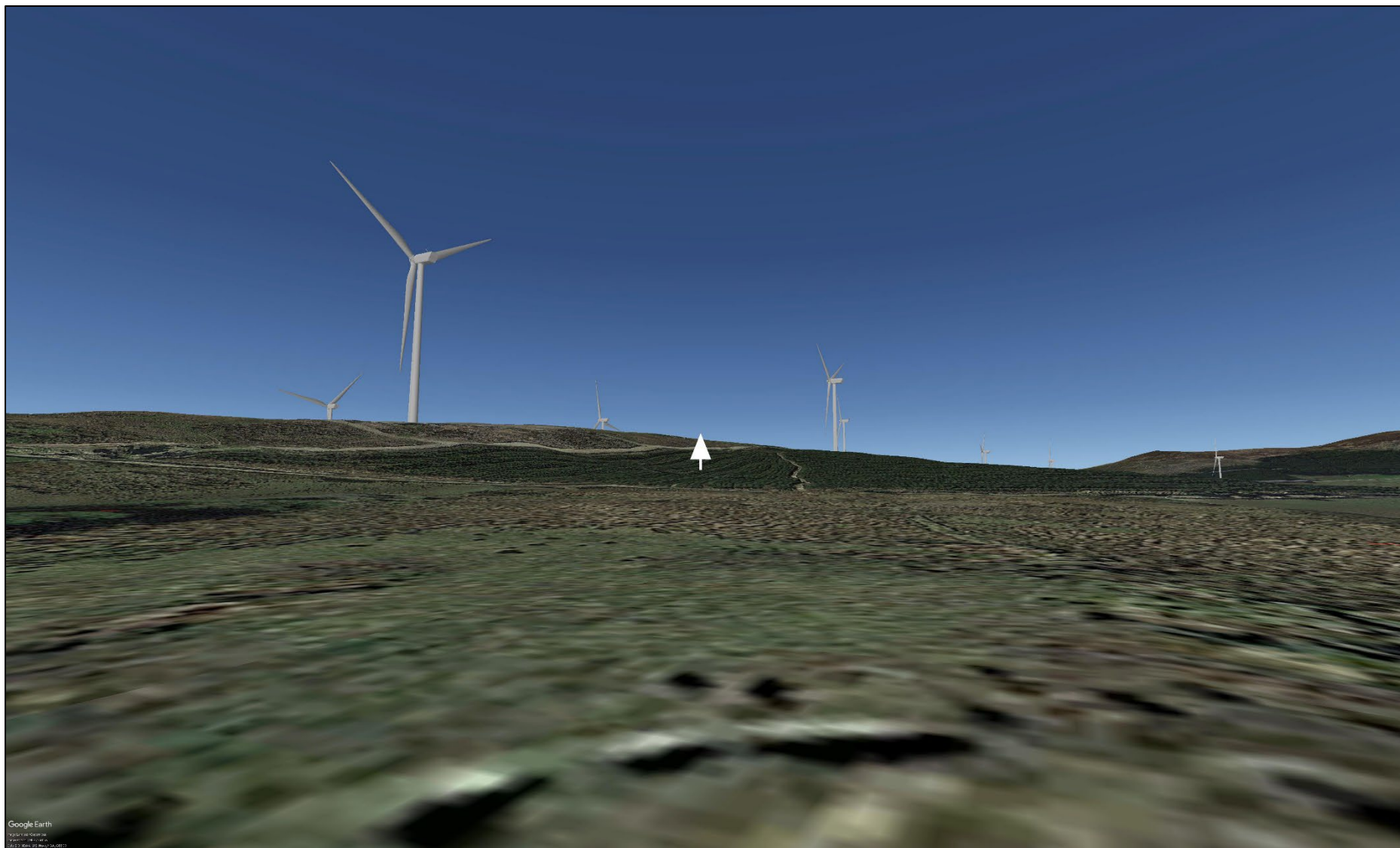






(courtesy of Macro Works)



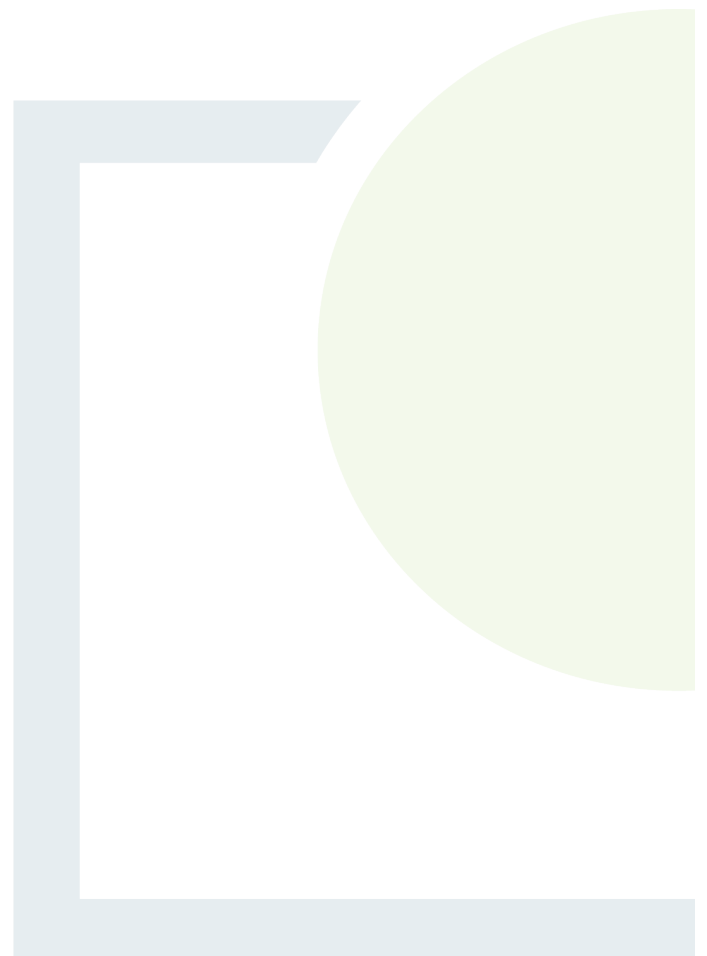




CONSULTANTS IN ENGINEERING,  
ENVIRONMENTAL SCIENCE  
& PLANNING

## Appendix 14.2

Cultural Heritage Plates







**Plate 14-1:** View of Stone Circle (CO060-008----) showing alignment to southwest in background



**Plate 14-2:** Drone view of Stone Circle (CO060-008----) with location indicated by arrow and surrounding land improvement works in adjoining fields also visible





**Plate 14-3:** Ground level view of Stone Circle (CO060-008----) within forest clearing



**Plate 14-4:** Drone view of Stone Circle (CO60-007----) showing extent of forestry screening





**Plate 14-5:** Drone view of ringfort (CO049-022) in Carrigagulla townland















**Plate 14-11:** View of large upright stones in use as gate/fence posts in the vicinity of stone row (C0049-020----). No works are proposed at this location

























**Plate 14-23:** View of forestry at proposed location of T1 from south





**Plate 14-24:** View south-eastwards across the proposed location of T2



**Plate 14-25:** View from north of proposed T3 location

















**Plate 14-35:** View of section of proposed T9 hardstand within area of improved pasture





**Plate 14-36:** View of proposed location of T10 within improved grassland



**Plate 14-37:** View from north of farm track and watercourse on access route between T10 and T9





**Plate 14-38:** View of watercourse between T10 and T9 to be crossed by clear span bridge



**Plate 14-39:** View of existing track and forestry at proposed location of T11





**Plate 14-40:** View of farmhouse ruins within forestry to southeast of proposed location of T11



**Plate 14-41:** View of forestry at proposed location of T12





**Plate 14-42:** View of proposed access route and location of T13 from northwest



**Plate 14-43:** View of turf-cutting section within environs of T13





**Plate 14-44:** View of felling at proposed location of T14 from south



**Plate 14-45:** View towards forestry containing proposed location of T15 from west



**Plate 14-46:** View towards forestry containing proposed location of T15 from north with cut section along existing forest road visible in foreground







**Plate 14-48:** View towards proposed location of T17 from north



**Plate 14-49:** View of proposed access route to T17 from south





**Plate 14-50:** General view towards forest containing proposed locations of T18, 19 and 20 from west



**Plate 14-51:** View of existing road and forestry containing proposed locations of T18, 19 and 20 from west





**Plate 14-52:** View of standing forestry within borrow pit area



**Plate 14-53:** View of felled forestry within borrow pit area





**Plate 14-54:** View of forestry at proposed site compound area from south



**Plate 14-55:** View of Bridge (CO060-002----) along grid connection route, interventions to structure and river will be avoided by use of horizontal directional drilling





**Plate 14-56:** View of NIAH-listed house (NIAH ref. 20906002 ) and post-box (NIAH ref. 20906002) adjacent to road forming grid connection route in Bawnmore (both indicated with arrows)



**Plate 14-57:** View from south of undesignated road bridge along section of grid connection route in Bawnmore, interventions to structure and river will be avoided by use of horizontal directional drilling





**Plate 14-58:** View of modern famine memorial set back from west side of road forming the grid connection route at a crossroads in Killberrihert townland



**Plate 14-59:** View of modern famine memorial set back from east side of road forming the grid connection route at a crossroads in Killberrihert townland





**Plate 14-60:** View of proposed TDR staging area within field in Drishane demesne from southwest



**Plate 14-61:** View of interior of modern Drishane cemetery towards proposed TDR staging area to south screened by boundary wall





**Plate 14-62:** View from south of original Drishane demesne roadside wall adjacent to south end of proposed TDR staging area



**Plate 14-63:** View from north of section of rebuilt modern boundary wall at proposed location of north entrance to the Drishane TDR staging area.





**Plate 14-64:** View from west of bridge feature (Project ref. WF-HF8) to be removed as part of TDR



**Plate 14-65:** View of south parapet of bridge feature (Project ref. WF-HF8)





**Plate 14-66:** View from south of revetment of bridge feature (Project ref. WF-HF8)



**Plate 14-67:** View from north of west culvert of bridge feature (Project ref. WF-HF8)





**Plate 14-68:** Bridge feature (Project ref. WF-HF8) showing west culvert



**Plate 14-69:** Bridge feature (Project ref. WF-HF8) showing dry east culvert





**Plate 14-70:** View of narrow stream at location of bridge feature (Project ref. WF-HF8)